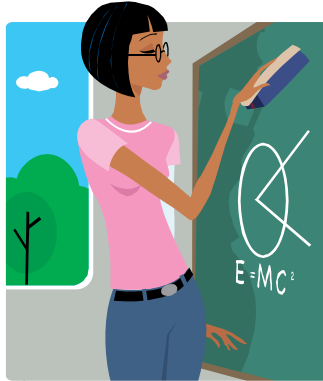


WHITLOWE R. GREEN
COLLEGE OF EDUCATION
STUDENT TEACHING APPLICATION INFORMATION

Spring 2010 Semester



We are currently accepting Student Teaching Applications for the Spring 2010 semester. Please turn in your student teaching application and supporting documentation to Room 301.

- Applications can be DOWNLOADED from the College of Education website.
<http://www.pvamu.edu/pages/5297.asp>
- Students, who anticipate student teaching in Spring 2010 must turn in their application and supporting documentation to the Student Teaching office on or before **September 16, 2009**.
- An interview and writing sample will be scheduled after **September 16, 2009**.

Please email Ms. Courtney Edwards, Senior Secretary at cmedwards@pvmau.edu if you have any questions.

****Please Note****

All applications must be in the Student Teaching Office on or before
September 16, 2009.

Dr. Patricia A. Smith, Interim Director
Student Teaching/Internship & Field Experiences 936) 261.3425 (Office) – 936) 261.3615 (Fax)