

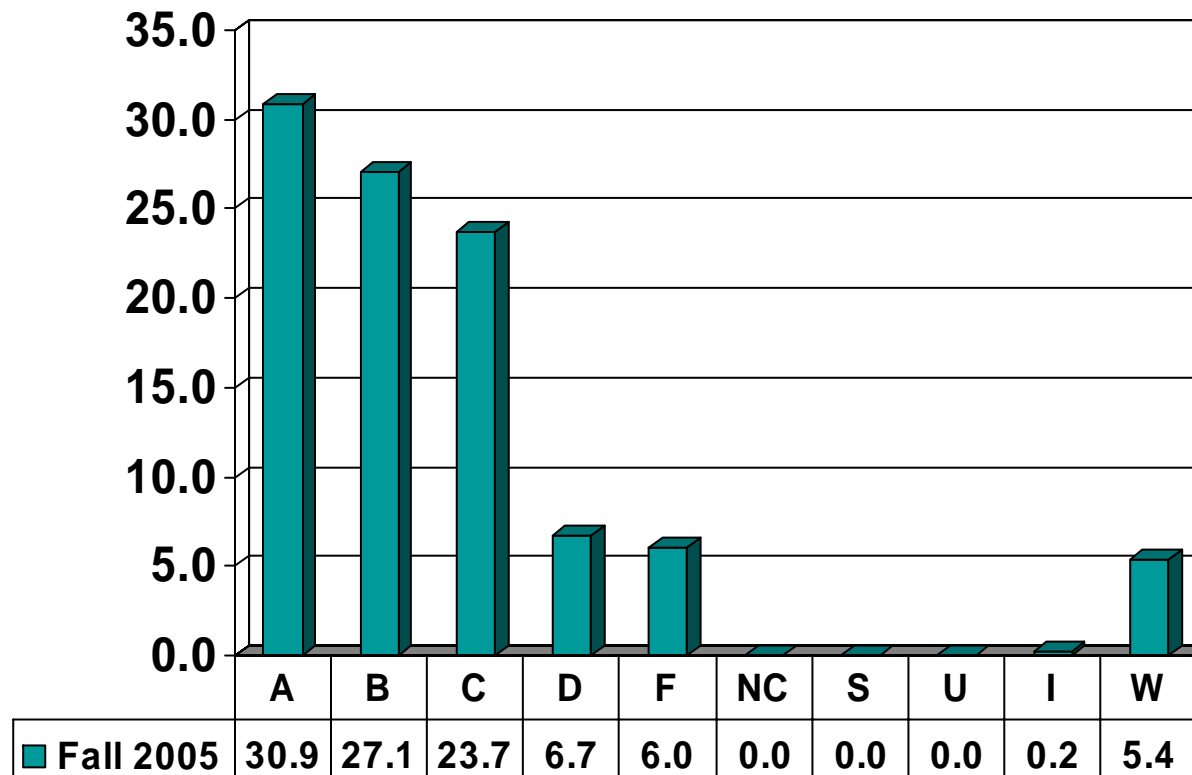
Prairie View A&M University  
Grade Distribution Report  
Fall 2004\* & FALL 2005  
COMPARISONS

Undergraduate Grade  
Distribution by Course

\*When available

# ENGINEERING

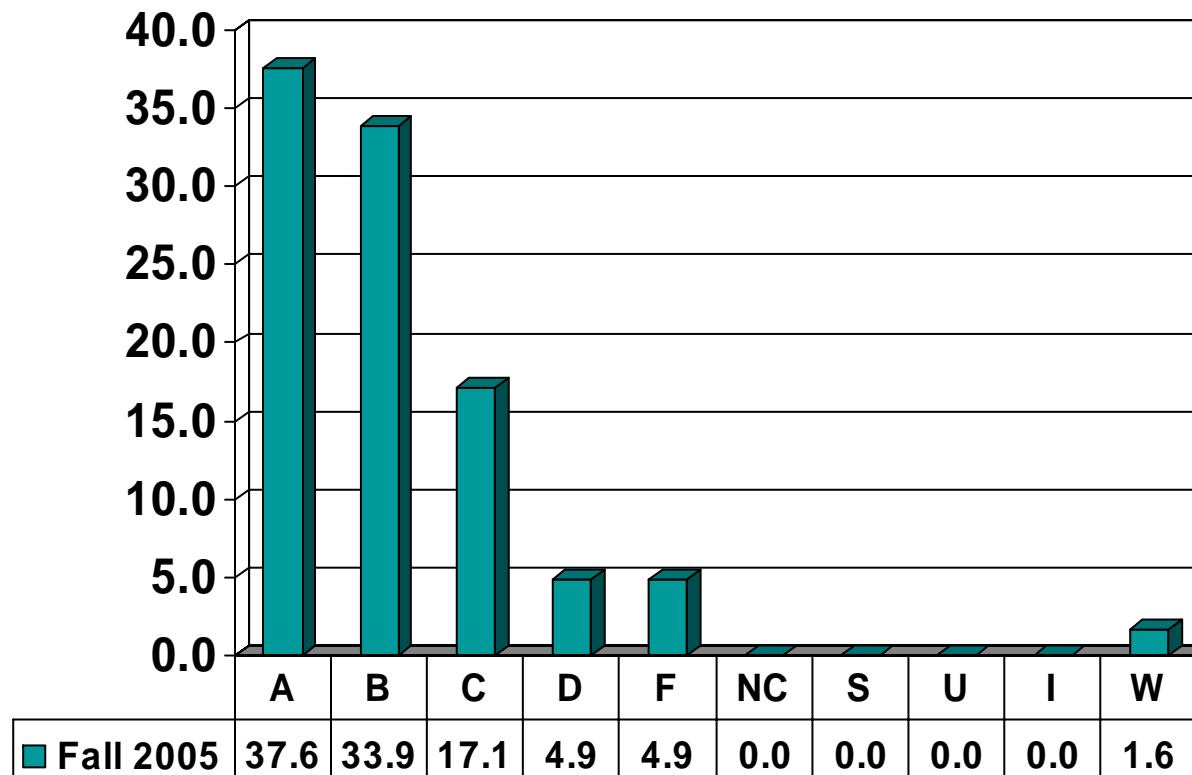
Undergraduate Courses – No. of Grades = 3055



Note: Percent columns show rounded figures and may not total 100%.

# CHEMICAL ENGINEERING

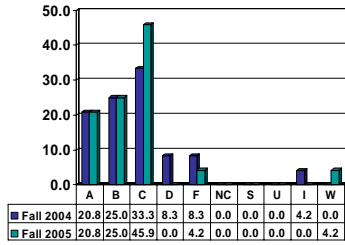
Undergraduate Courses – No. of Grades = 245



Note: Percent columns show rounded figures and may not total 100%.

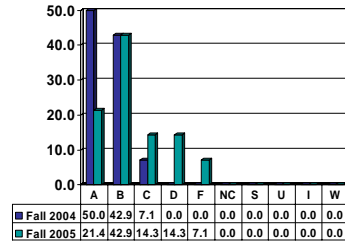
### CHEMICAL ENGINEERING 2013

Sophomore UG – No. of Grades = 24



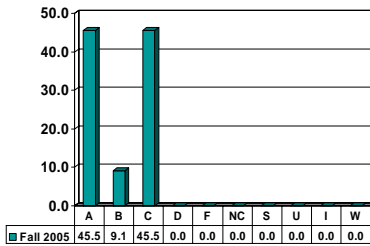
### CHEMICAL ENGINEERING 2043

Sophomore UG – No. of Grades = 14



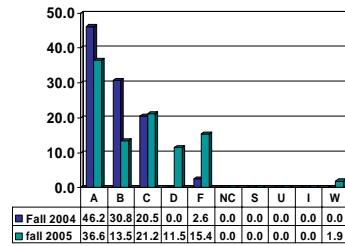
### CHEMICAL ENGINEERING 2053

Sophomore UG – No. of Grades = 11



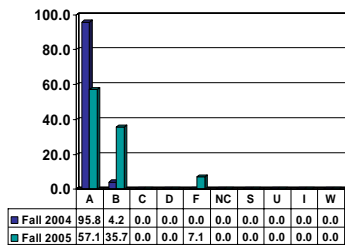
### CHEMICAL ENGINEERING 3003

Junior UG – No. of Grades = 52



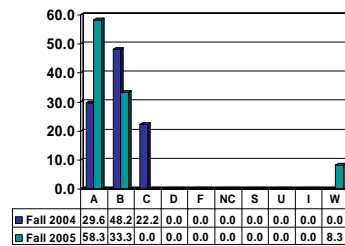
### CHEMICAL ENGINEERING 3011

Junior UG – No. of Grades = 14



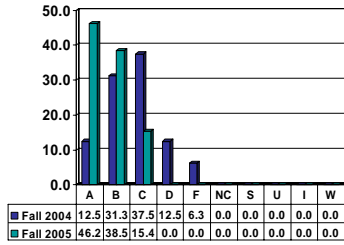
### CHEMICAL ENGINEERING 3013

Junior UG – No. of Grades = 12



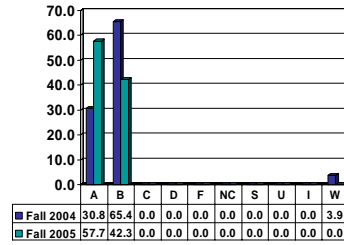
### CHEMICAL ENGINEERING 3043

Junior UG – No. of Grades = 13



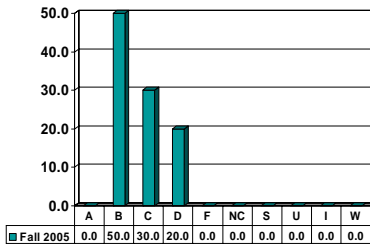
### CHEMICAL ENGINEERING 3051

Junior UG – No. of Grades = 26



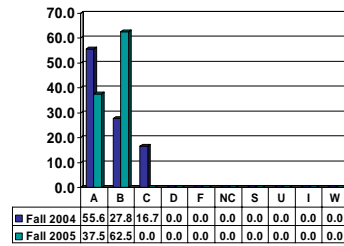
### CHEMICAL ENGINEERING 3063

Junior UG – No. of Grades = 10



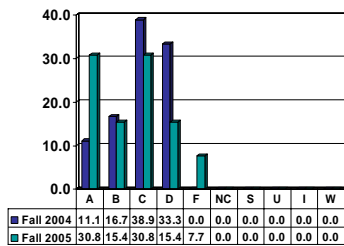
### CHEMICAL ENGINEERING 4031

Senior UG – No. of Grades = 8



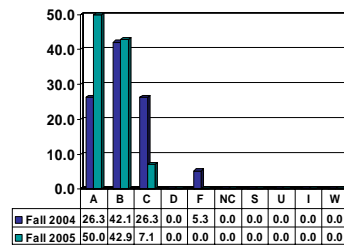
### CHEMICAL ENGINEERING 4033

Senior UG – No. of Grades = 13



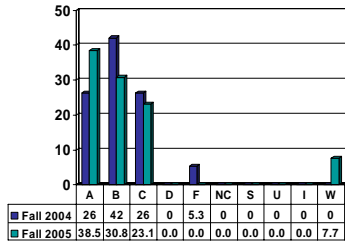
### CHEMICAL ENGINEERING 4043

Senior UG – No. of Grades = 14



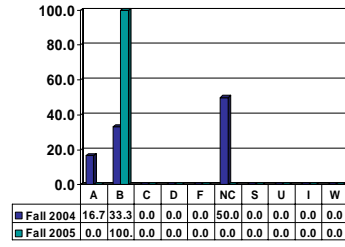
### CHEMICAL ENGINEERING 4103

Senior UG – No. of Grades = 13



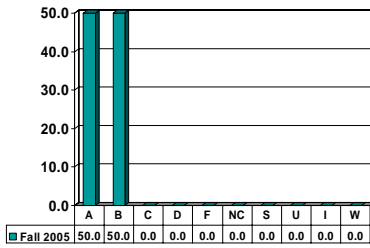
### CHEMICAL ENGINEERING 4473

Senior UG – No. of Grades = 11



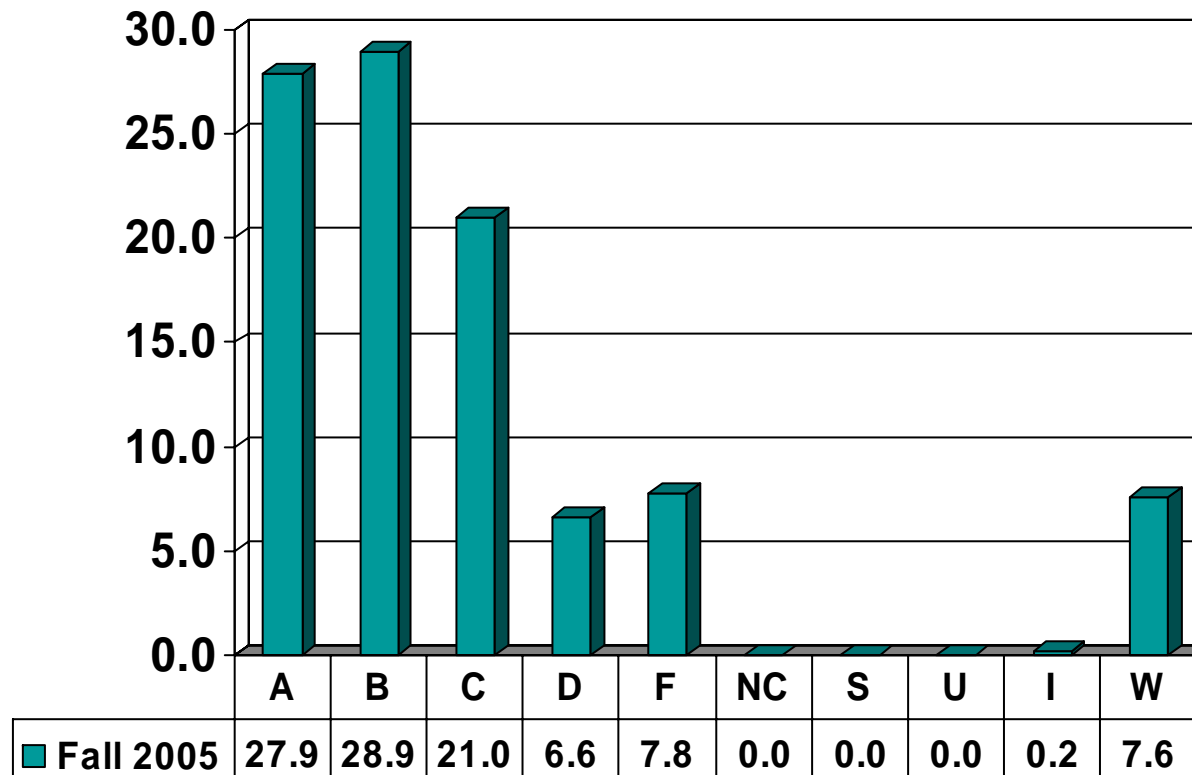
### CHEMICAL ENGINEERING 4483

Senior UG – No. of Grades = 10



# COMPUTER SCIENCE

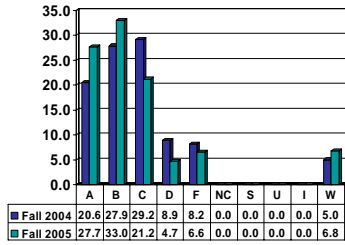
Undergraduate Courses – No. of Grades = 854



Note: Percent columns show rounded figures and may not total 100%.

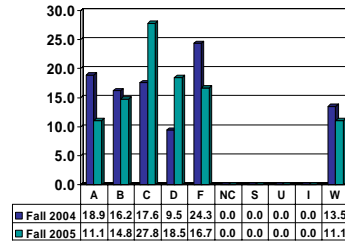
## COMPUTER SCIENCE 1003

Freshman UG – No. of Grades = 591



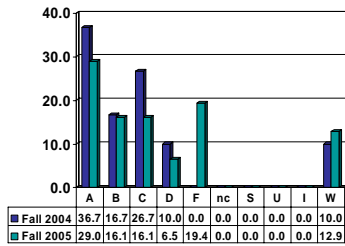
## COMPUTER SCIENCE 1013

Freshman UG – No. of Grades = 54



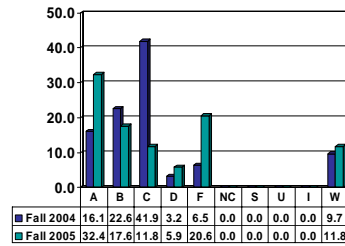
## COMPUTER SCIENCE 1211

Freshman UG – No. of Grades = 31



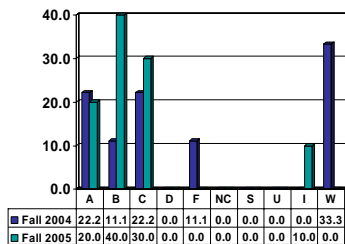
## COMPUTER SCIENCE 1213

Freshman UG – No. of Grades = 34



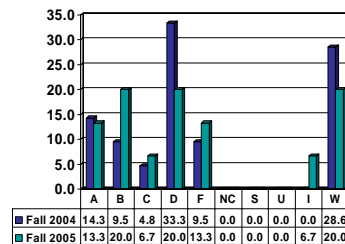
## COMPUTER SCIENCE 1221

Freshman UG – No. of Grades = 10



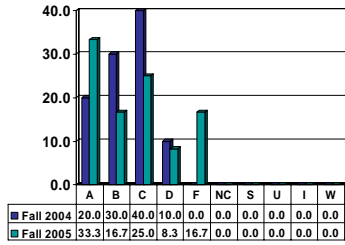
## COMPUTER SCIENCE 1223

Freshman UG – No. of Grades = 15



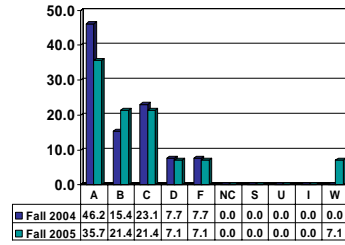
### COMPUTER SCIENCE 2013

Sophomore UG – No. of Grades = 12



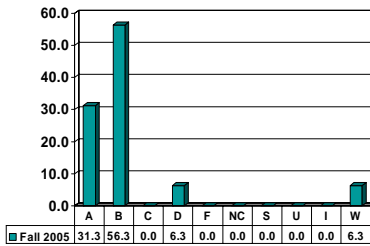
### COMPUTER SCIENCE 3003

Junior UG – No. of Grades = 14



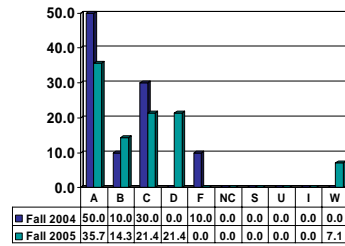
### COMPUTER SCIENCE 3033

Junior UG – No. of Grades = 16



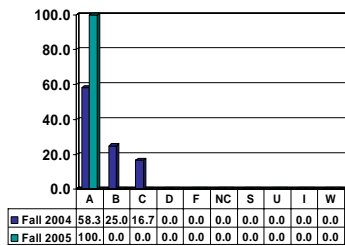
### COMPUTER SCIENCE 3043

Junior UG – No. of Grades = 14



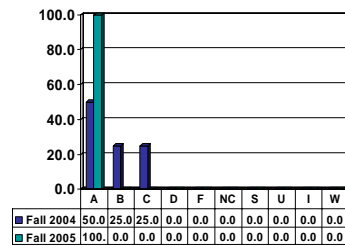
### COMPUTER SCIENCE 4001

Senior UG – No. of Grades = 10



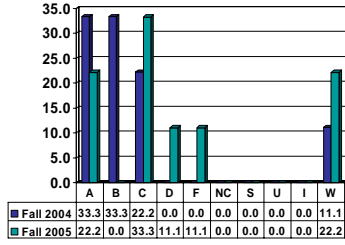
### COMPUTER SCIENCE 4072

Senior UG – No. of Grades = 10



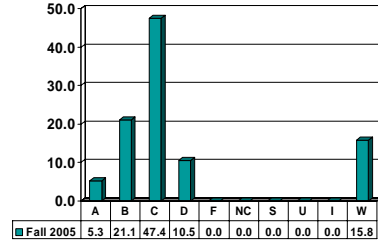
## COMPUTER SCIENCE 4123

Senior UG – No. of Grades = 9



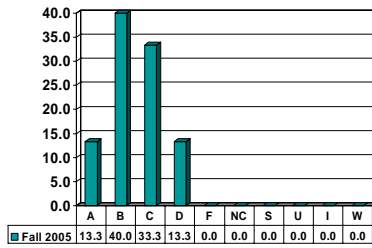
## COMPUTER SCIENCE 4133

Senior UG – No. of Grades = 19



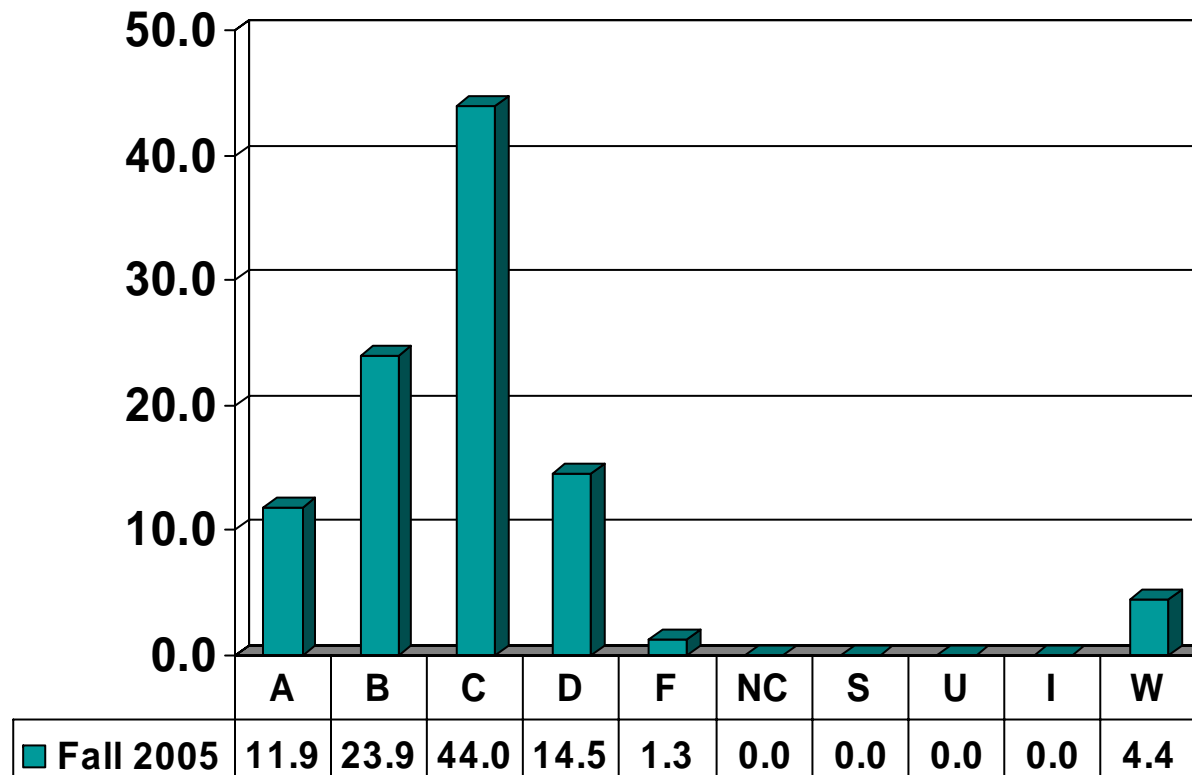
## COMPUTER SCIENCE 4953

Senior UG – No. of Grades = 15



# CIVIL ENGINEERING

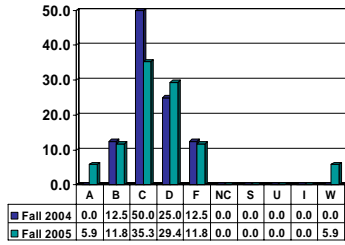
Undergraduate Courses – No. of Grades = 159



Note: Percent columns show rounded figures and may not total 100%.

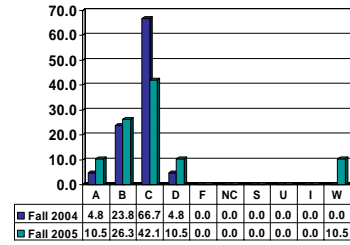
### CIVIL ENGINEERING 2043

Sophomore UG – No. of Grades = 17



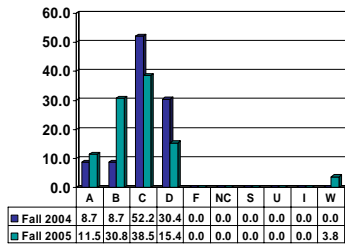
### CIVIL ENGINEERING 2053

Sophomore UG – No. of Grades = 19



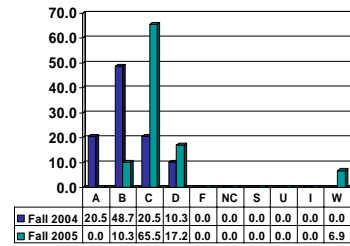
### CIVIL ENGINEERING 2063

Sophomore UG – No. of Grades = 26



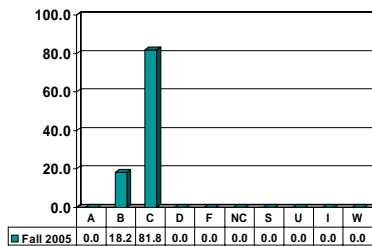
### CIVIL ENGINEERING 2454

Sophomore UG – No. of Grades = 29



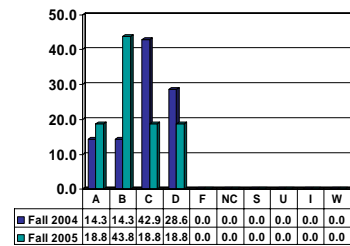
### CIVIL ENGINEERING 3073

Sophomore UG – No. of Grades = 11



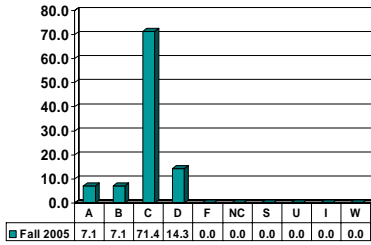
### CIVIL ENGINEERING 4013

Senior UG – No. of Grades = 16



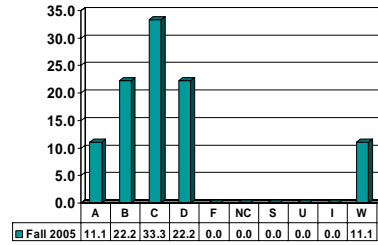
### CIVIL ENGINEERING 4063

Senior UG – No. of Grades = 14



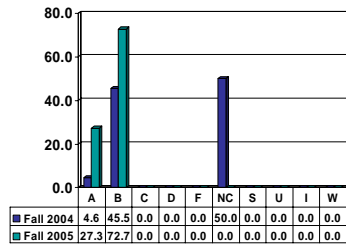
### CIVIL ENGINEERING 4223

Senior UG – No. of Grades = 9



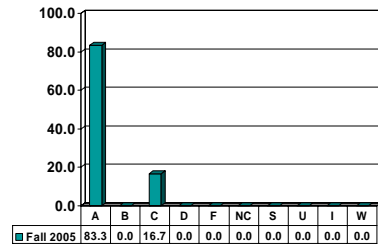
### CIVIL ENGINEERING 4473

Senior UG – No. of Grades = 11



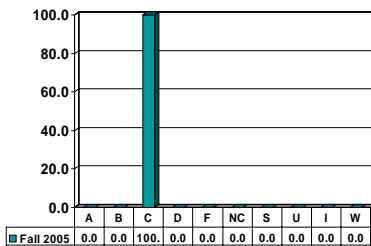
### CIVIL ENGINEERING 4991

Senior UG – No. of Grades = 6



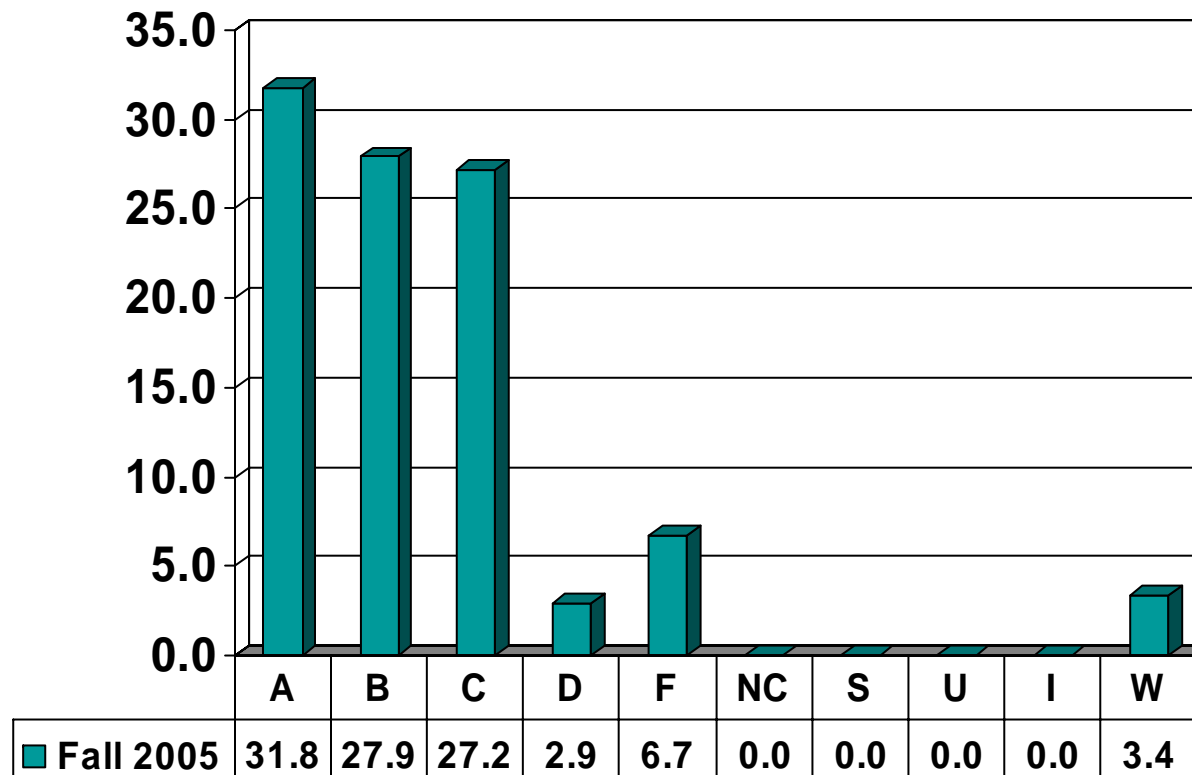
### CIVIL ENGINEERING 4993

Senior UG – No. of Grades = 1



# ENGINEERING TECHNOLOGY

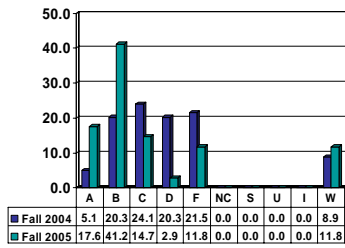
Undergraduate Courses – No. of Grades = 823



Note: Percent columns show rounded figures and may not total 100%.

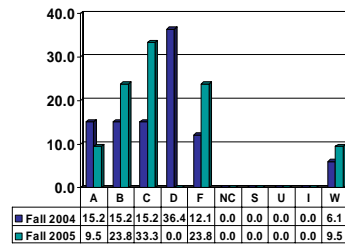
### COMPUTER ENGINEERING TECHNOLOGY 1013

Freshman UG – No. of Grades = 34



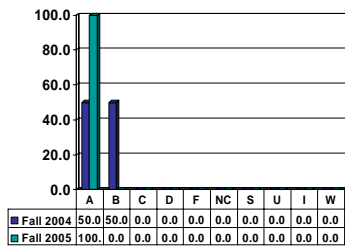
### COMPUTER ENGINEERING TECHNOLOGY 1023

Freshman UG – No. of Grades = 21



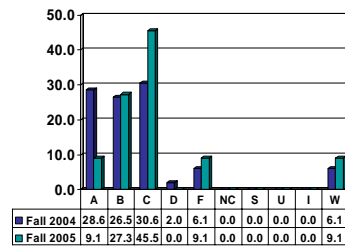
### COMPUTER ENGINEERING TECHNOLOGY 2006

Sophomore UG – No. of Grades = 5



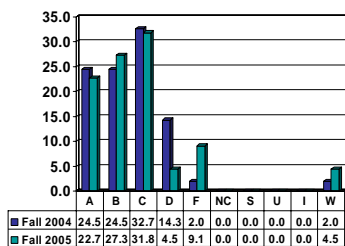
### COMPUTER ENGINEERING TECHNOLOGY 2111

Sophomore UG – No. of Grades = 22



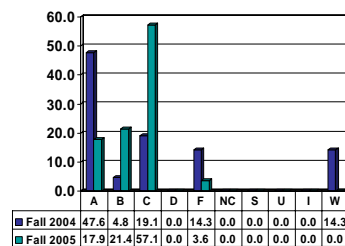
### COMPUTER ENGINEERING TECHNOLOGY 2113

Sophomore UG – No. of Grades = 22



### COMPUTER ENGINEERING TECHNOLOGY 3013

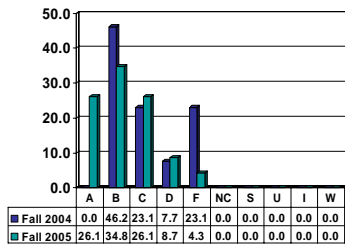
Junior UG – No. of Grades = 28



Note: Percent columns show rounded figures and may not total 100%.

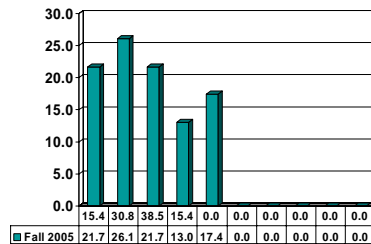
### COMPUTER ENGINEERING TECHNOLOGY 3161

Junior UG – No. of Grades = 23



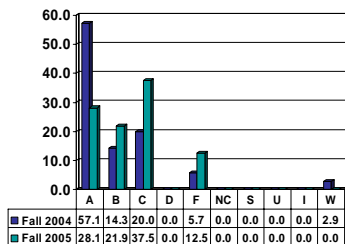
### COMPUTER ENGINEERING TECHNOLOGY 3163

Junior UG – No. of Grades = 23



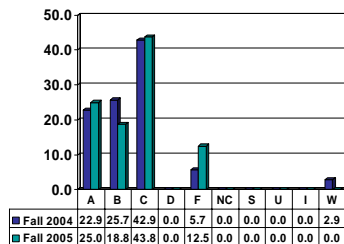
### COMPUTER ENGINEERING TECHNOLOGY 3231

Junior UG – No. of Grades = 32



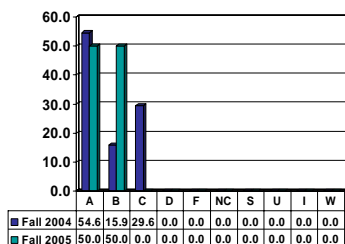
### COMPUTER ENGINEERING TECHNOLOGY 3233

Junior UG – No. of Grades = 32



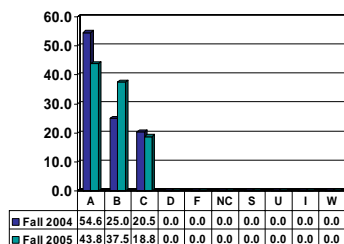
### COMPUTER ENGINEERING TECHNOLOGY 4061

Senior UG – No. of Grades = 16



### COMPUTER ENGINEERING TECHNOLOGY 4063

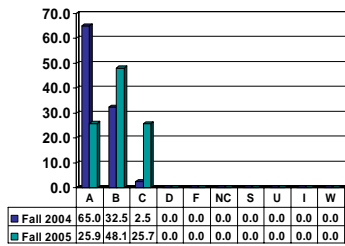
Senior UG – No. of Grades = 16



Note: Percent columns show rounded figures and may not total 100%.

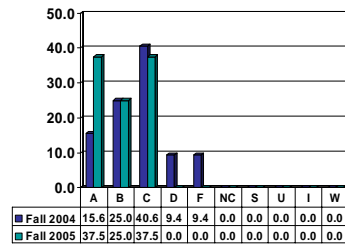
## COMPUTER ENGINEERING TECHNOLOGY 4082

Senior UG – No. of Grades = 27



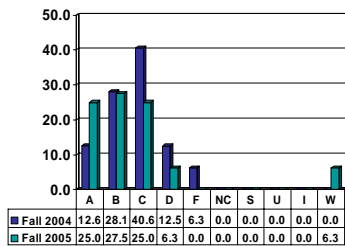
## COMPUTER ENGINEERING TECHNOLOGY 4151

Senior UG – No. of Grades = 16



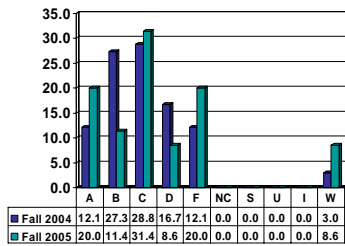
## COMPUTER ENGINEERING TECHNOLOGY 4153

Senior UG – No. of Grades = 16



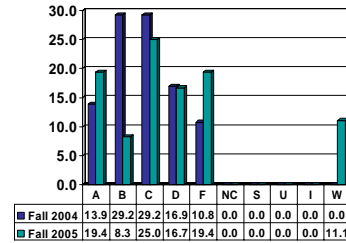
### ELECTRICAL ENGINEERING TECHNOLOGY 1111

Freshman UG – No. of Grades = 35



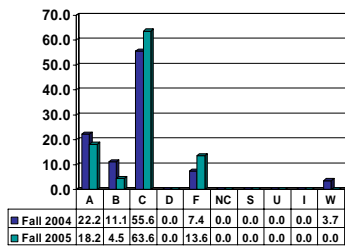
### ELECTRICAL ENGINEERING TECHNOLOGY 1113

Freshman UG – No. of Grades = 36



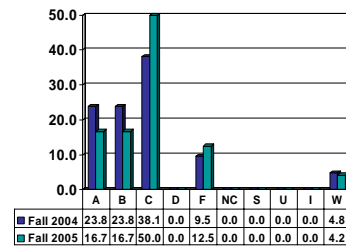
### ELECTRICAL ENGINEERING TECHNOLOGY 1141

Freshman UG – No. of Grades = 22



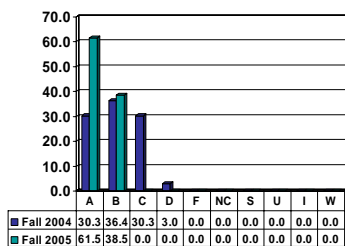
### ELECTRICAL ENGINEERING TECHNOLOGY 1143

Freshman UG – No. of Grades = 24



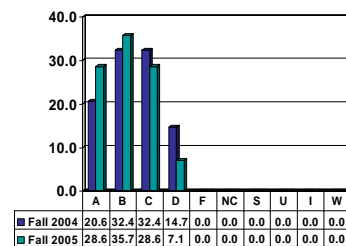
### ELECTRICAL ENGINEERING TECHNOLOGY 2221

Sophomore UG – No. of Grades = 13



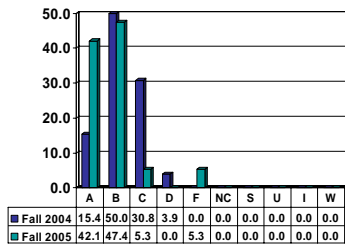
### ELECTRICAL ENGINEERING TECHNOLOGY 2223

Sophomore UG – No. of Grades = 14



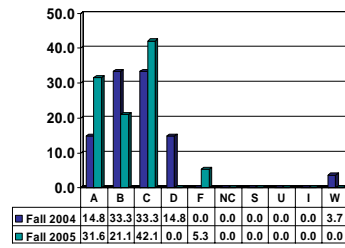
### ELECTRICAL ENGINEERING TECHNOLOGY 2251

Sophomore UG – No. of Grades = 19



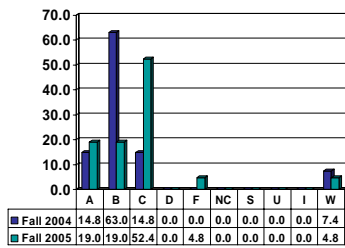
### ELECTRICAL ENGINEERING TECHNOLOGY 2253

Sophomore UG – No. of Grades = 19



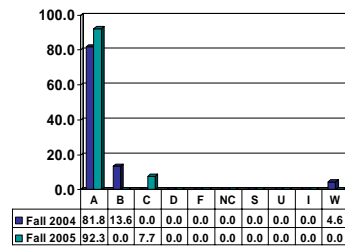
### ELECTRICAL ENGINEERING TECHNOLOGY 3023

Junior UG – No. of Grades = 21



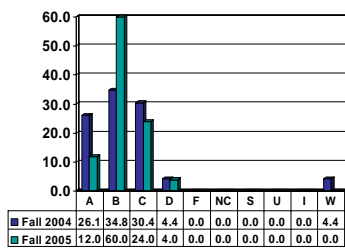
### ELECTRICAL ENGINEERING TECHNOLOGY 3451

Junior UG – No. of Grades = 26



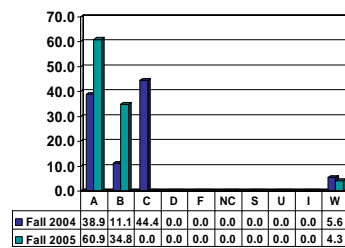
### ELECTRICAL ENGINEERING TECHNOLOGY 3453

Junior UG – No. of Grades = 25



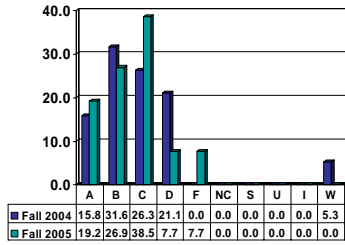
### ELECTRICAL ENGINEERING TECHNOLOGY 3521

Junior UG – No. of Grades = 23



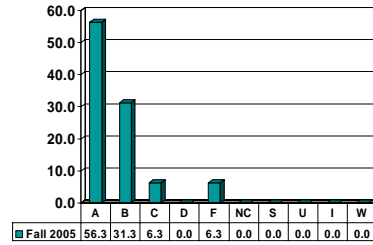
### ELECTRICAL ENGINEERING TECHNOLOGY 3523

Junior UG – No. of Grades = 26



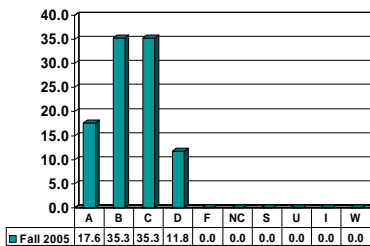
### ELECTRICAL ENGINEERING TECHNOLOGY 3701

Junior UG – No. of Grades = 16



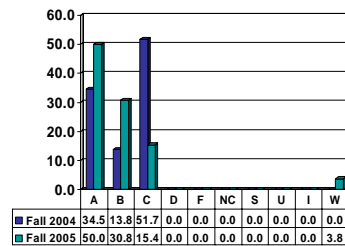
### ELECTRICAL ENGINEERING TECHNOLOGY 3703

Junior UG – No. of Grades = 17



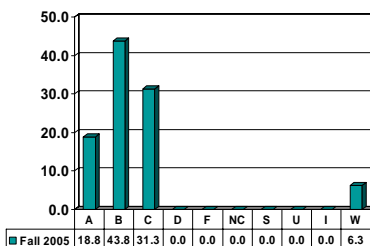
### ELECTRICAL ENGINEERING TECHNOLOGY 4082

Senior UG – No. of Grades = 26



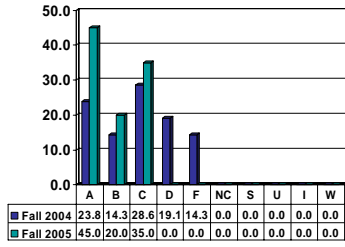
### ELECTRICAL ENGINEERING TECHNOLOGY 4513

Senior UG – No. of Grades = 16



# MECHANICAL ENGINEERING TECHNOLOGY 3103

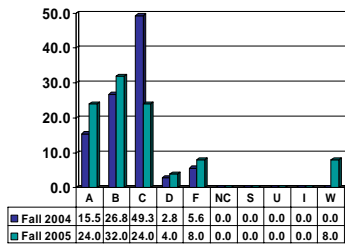
Junior UG – No. of Grades = 20



Note: Percent columns show rounded figures and may not total 100%.

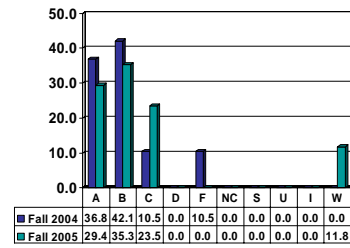
## TECHNOLOGY 1002

Freshman UG – No. of Grades = 25



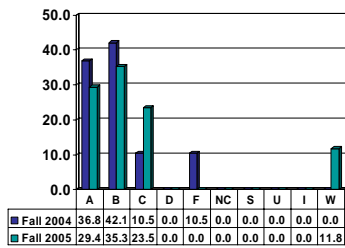
## TECHNOLOGY 1103

Freshman UG – No. of Grades = 17



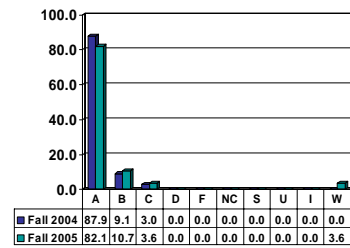
## TECHNOLOGY 1123

Freshman UG – No. of Grades = 9



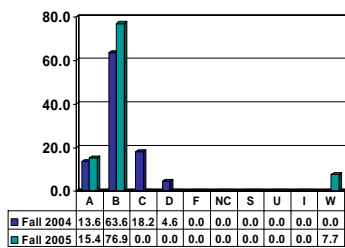
## TECHNOLOGY 3203

Junior UG – No. of Grades = 28



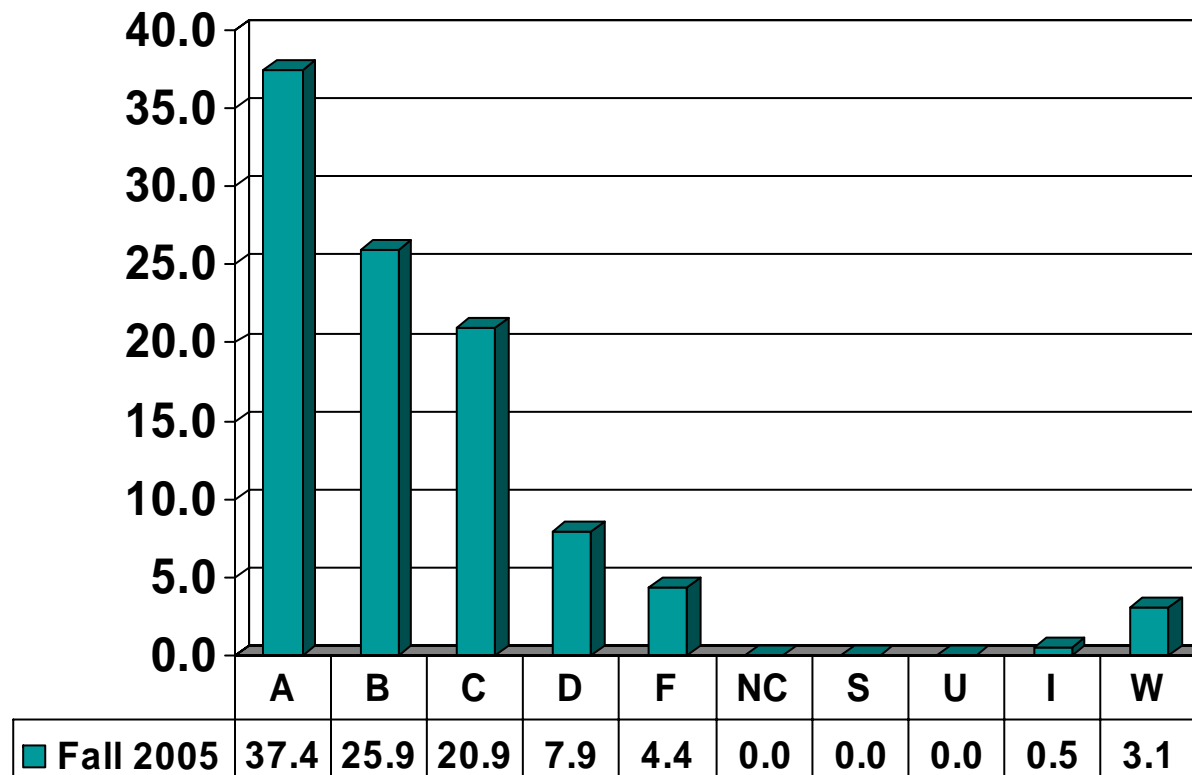
## TECHNOLOGY 4273

Senior UG – No. of Grades = 13



# ELECTRICAL ENGINEERING

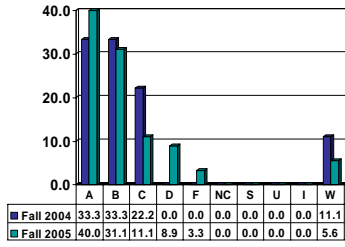
Undergraduate Courses – No. of Grades = 618



Note: Percent columns show rounded figures and may not total 100%.

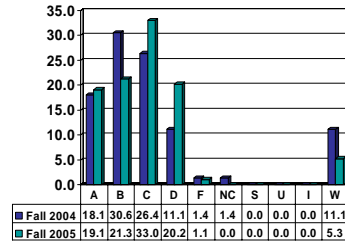
### ELECTRICAL ENGINEERING 1022

Freshman UG – No. of Grades = 90



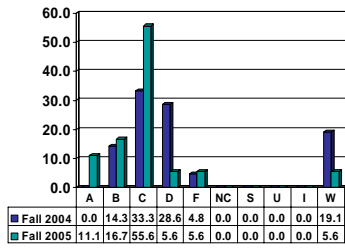
### ELECTRICAL ENGINEERING 1043

Freshman UG – No. of Grades = 94



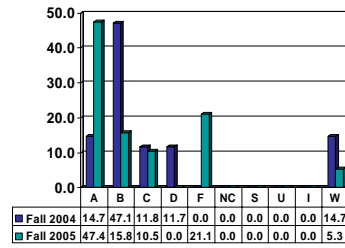
### ELECTRICAL ENGINEERING 2023

Sophomore UG – No. of Grades = 18



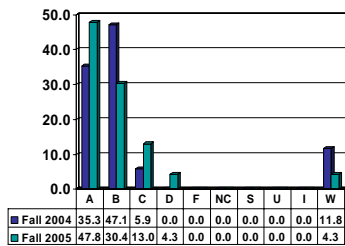
### ELECTRICAL ENGINEERING 2053

Sophomore UG – No. of Grades = 19



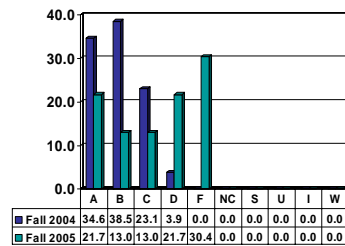
### ELECTRICAL ENGINEERING 3011

Junior UG – No. of Grades = 23



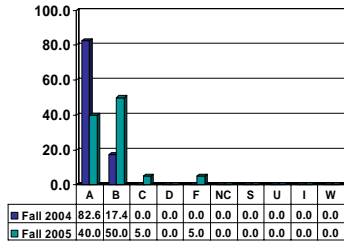
### ELECTRICAL ENGINEERING 3013

Junior UG – No. of Grades = 23



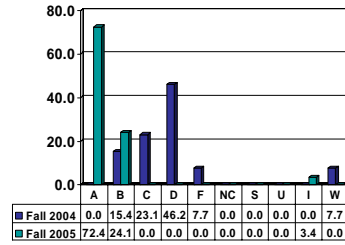
### ELECTRICAL ENGINEERING 3021

Junior UG – No. of Grades = 20



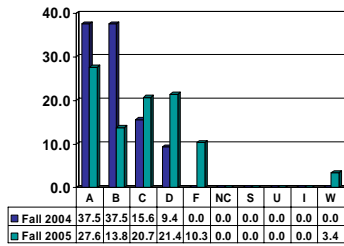
### ELECTRICAL ENGINEERING 3023

Junior UG – No. of Grades = 29



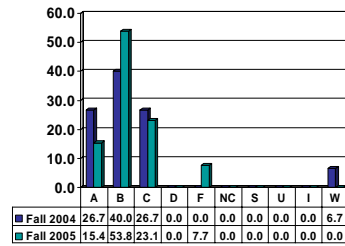
### ELECTRICAL ENGINEERING 3033

Junior UG – No. of Grades = 29



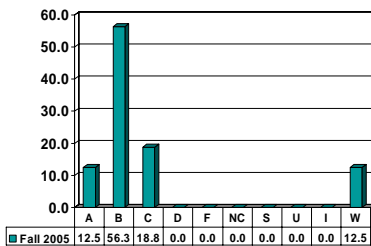
### ELECTRICAL ENGINEERING 3043

Junior UG – No. of Grades = 13



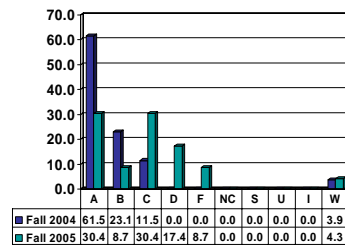
### ELECTRICAL ENGINEERING 3051

Junior UG – No. of Grades = 16



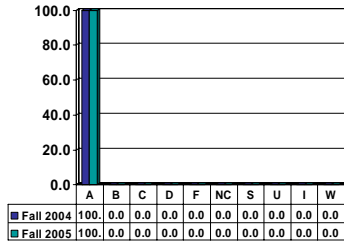
### ELECTRICAL ENGINEERING 3063

Junior UG – No. of Grades = 23



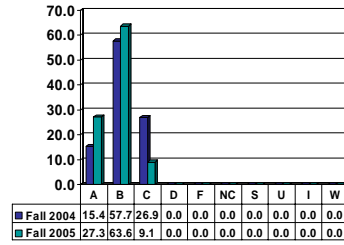
### ELECTRICAL ENGINEERING 3156

Junior UG – No. of Grades = 3



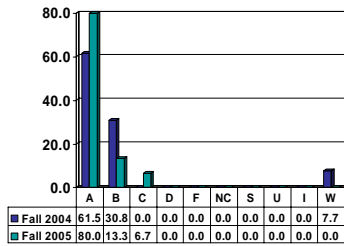
### ELECTRICAL ENGINEERING 4003

Senior UG – No. of Grades = 11



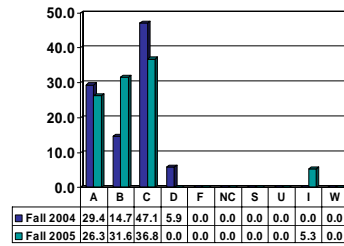
### ELECTRICAL ENGINEERING 4011

Senior UG – No. of Grades = 15



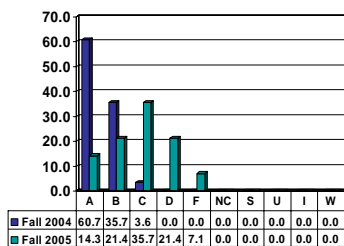
### ELECTRICAL ENGINEERING 4013

Senior UG – No. of Grades = 19



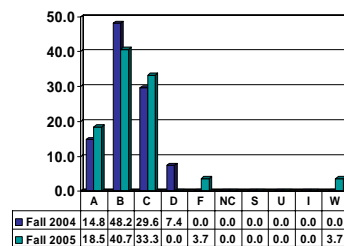
### ELECTRICAL ENGINEERING 4033

Senior UG – No. of Grades = 14



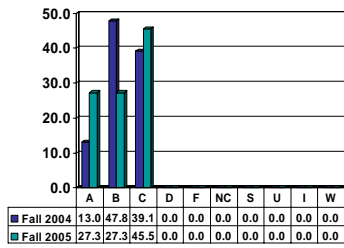
### ELECTRICAL ENGINEERING 4043

Senior UG – No. of Grades = 27



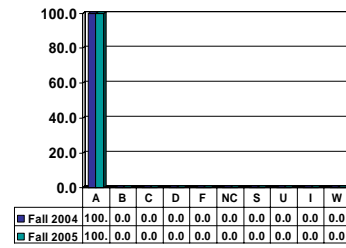
### ELECTRICAL ENGINEERING 4073

Senior UG – No. of Grades = 11



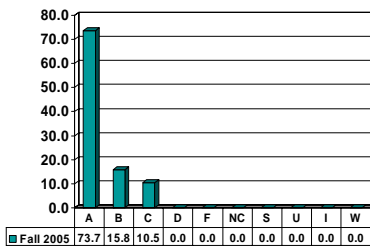
### ELECTRICAL ENGINEERING 4156

Senior UG – No. of Grades = 1



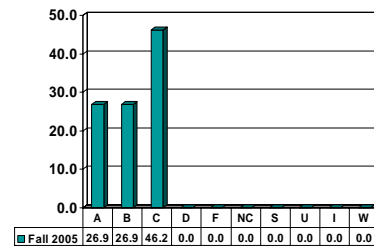
### ELECTRICAL ENGINEERING 4223

Senior UG – No. of Grades = 38



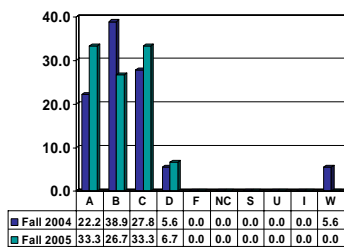
### ELECTRICAL ENGINEERING 4243

Senior UG – No. of Grades = 26



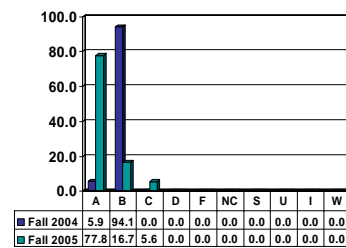
### ELECTRICAL ENGINEERING 4303

Senior UG – No. of Grades = 15



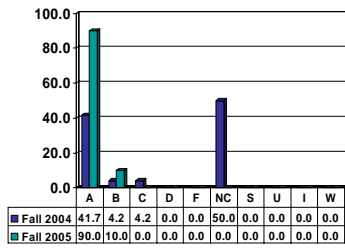
### ELECTRICAL ENGINEERING 4473

Senior UG – No. of Grades = 18



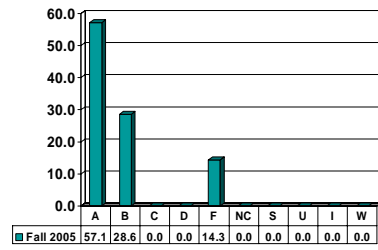
### ELECTRICAL ENGINEERING 4483

Senior UG – No. of Grades = 10



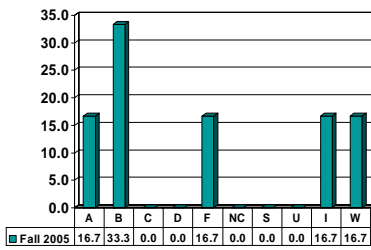
### ELECTRICAL ENGINEERING 4991

Senior UG – No. of Grades = 7



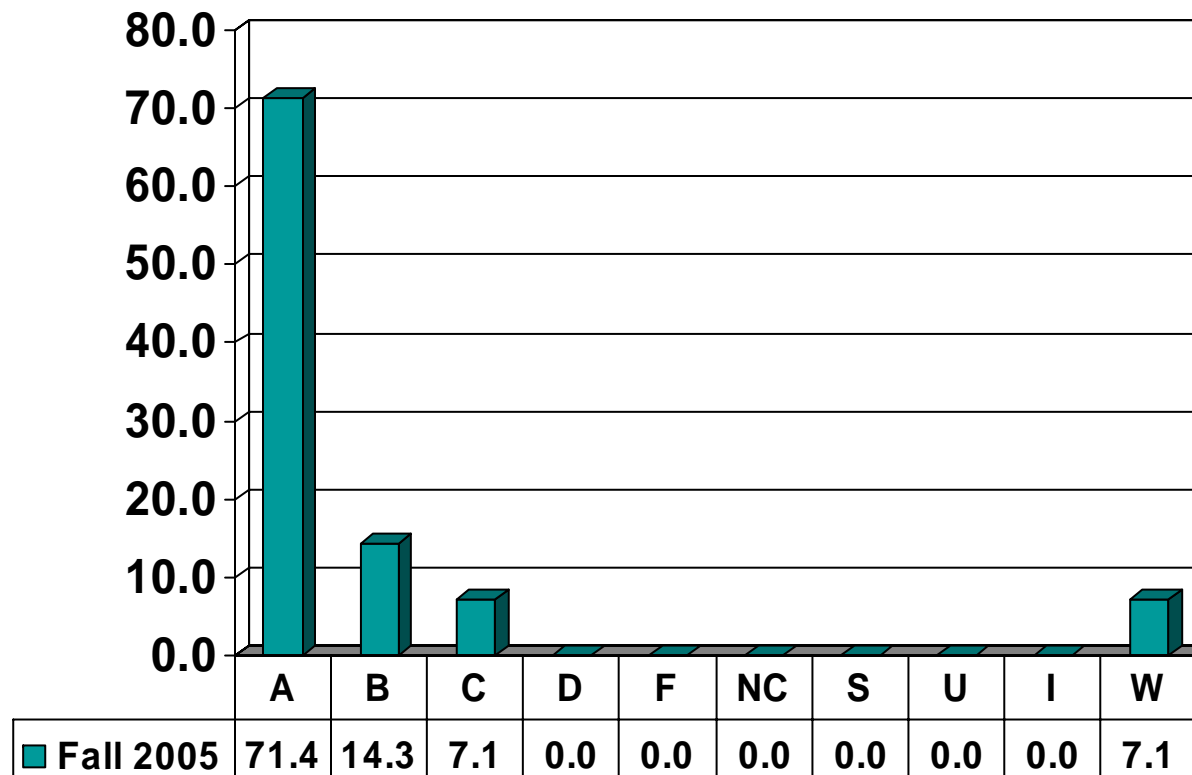
### ELECTRICAL ENGINEERING 4993

Senior UG – No. of Grades = 6



# GENERAL ENGINEERING

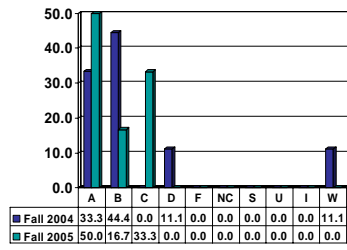
Undergraduate Courses – No. of Grades = 28



Note: Percent columns show rounded figures and may not total 100%.

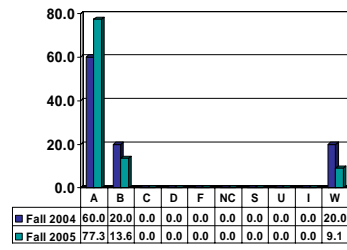
## GENERAL ENGINEERING 1013

Freshman UG – No. of Grades = 6



## GENERAL ENGINEERING 2151

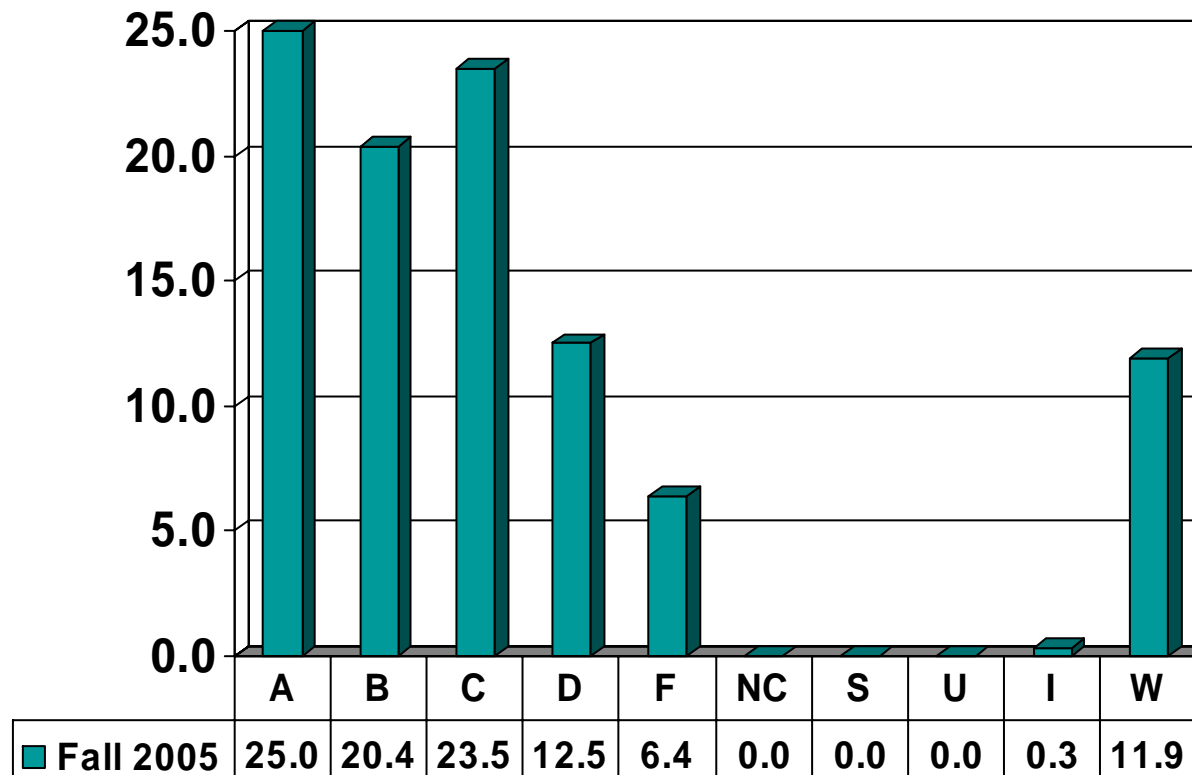
Sophomore UG – No. of Grades = 22



Note: Percent columns show rounded figures and may not total 100%.

# MECHANICAL ENGINEERING

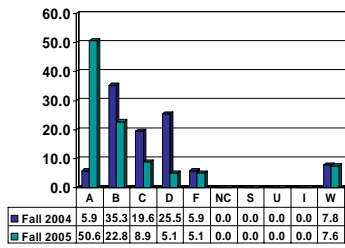
Undergraduate Courses – No. of Grades = 328



Note: Percent columns show rounded figures and may not total 100%.

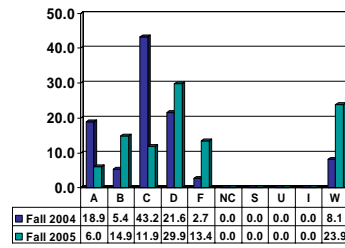
### MECHANICAL ENGINEERING 1213

Freshman UG – No. of Grades = 79



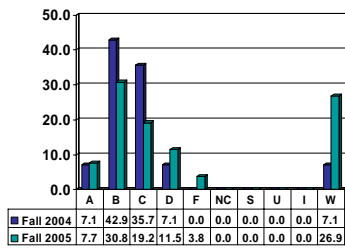
### MECHANICAL ENGINEERING 2013

Sophomore UG – No. of Grades = 67



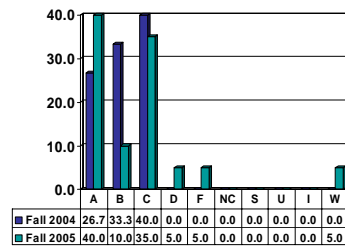
### MECHANICAL ENGINEERING 2023

Sophomore UG – No. of Grades = 26



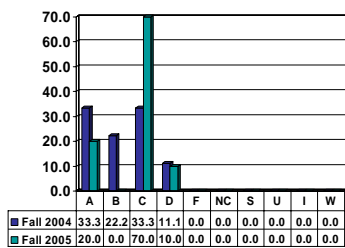
### MECHANICAL ENGINEERING 3011

Junior UG – No. of Grades = 20



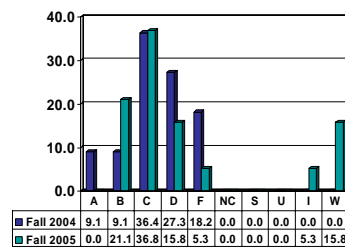
### MECHANICAL ENGINEERING 3013

Junior UG – No. of Grades = 10



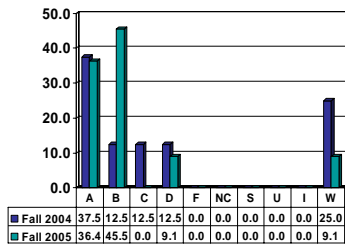
### MECHANICAL ENGINEERING 3023

Junior UG – No. of Grades = 19



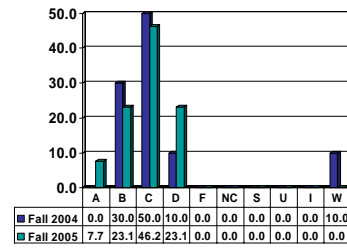
### MECHANICAL ENGINEERING 3031

Junior UG – No. of Grades = 11



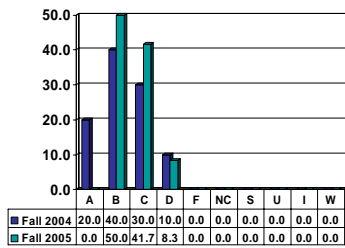
### MECHANICAL ENGINEERING 3033

Junior UG – No. of Grades = 13



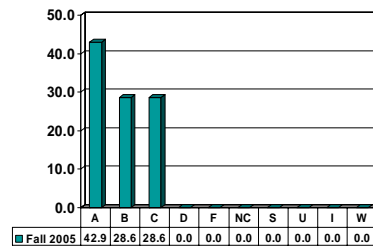
### MECHANICAL ENGINEERING 3043

Junior UG – No. of Grades = 12



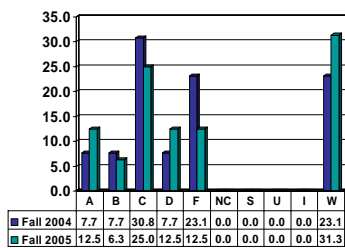
### MECHANICAL ENGINEERING 3053

Junior UG – No. of Grades = 14



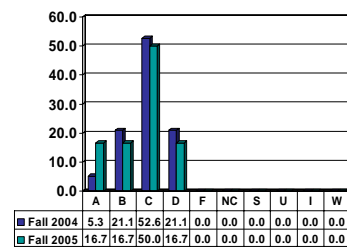
### MECHANICAL ENGINEERING 3063

Junior UG – No. of Grades = 16



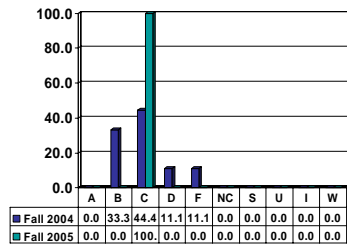
### MECHANICAL ENGINEERING 4063

Senior UG – No. of Grades = 6



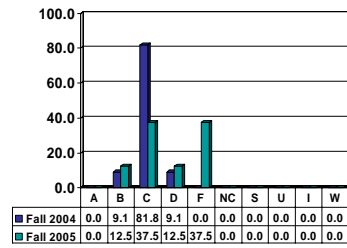
### MECHANICAL ENGINEERING 4093

Senior UG – No. of Grades = 7



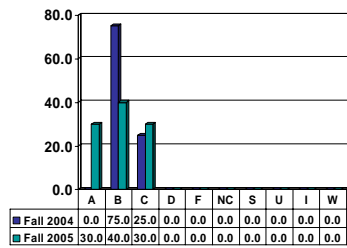
### MECHANICAL ENGINEERING 4123

Senior UG – No. of Grades = 8



### MECHANICAL ENGINEERING 4473

Senior UG – No. of Grades = 10



### MECHANICAL ENGINEERING 4483

Senior UG – No. of Grades = 10

