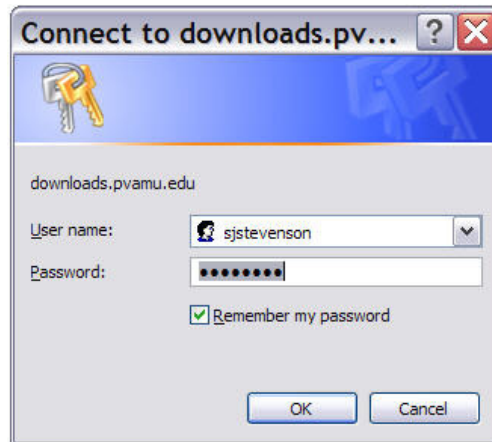


How to Download the PVAMU FTP Client

You can use just about any FTP client on the market that supports SSL/SFTP encryption. Common FTP clients include Hummingbird FileZilla, CuteFTP, WS-FTP. The college has a free open source product available from our <https://downloads.pvamu.edu> site.

To download Filezilla free of charge:

1. Type **https://downloads.pvamu.edu** in the location box of your browser and push **Enter**.
2. In the **Connect to downloads** pop-up window enter your PVAMU email **User name** and **Password**.
3. Click **OK**



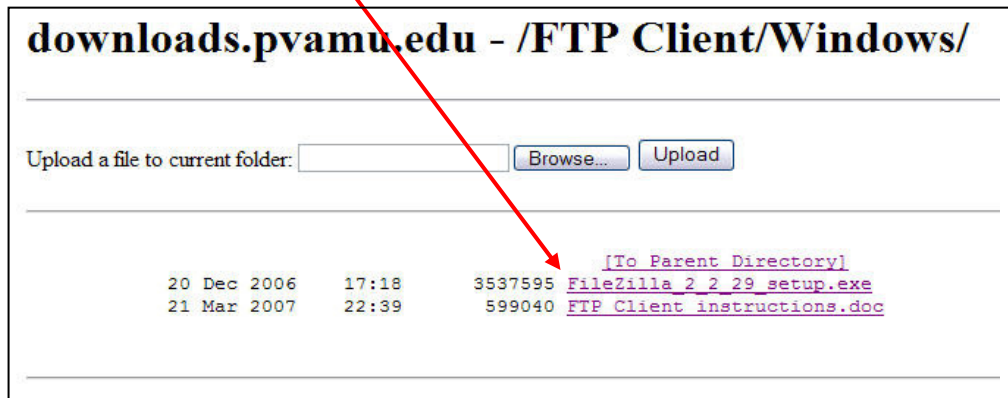
4. Select **FTP Client** at the Downloads screen

downloads.pvamu.edu - /

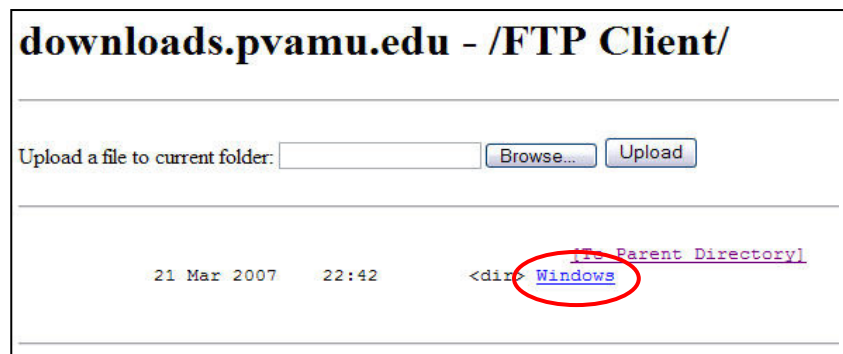
Upload a file to current folder:

20 Jul 2005	23:50	70736 pvamu.ppt
10 Jan 2007	19:11	<dir> FTP Client
10 Jan 2007	19:11	<dir> Virus Tools
10 Jan 2007	19:11	<dir> VOIP
10 Jan 2007	19:11	<dir> VPN
10 Jan 2007	19:11	<dir> winzip

5. On the next Screen select **FileZilla_2_2_29 setup.exe**



6. Click **Windows** on the next screen.



7. Click **Run** on the File Security pop-up window.



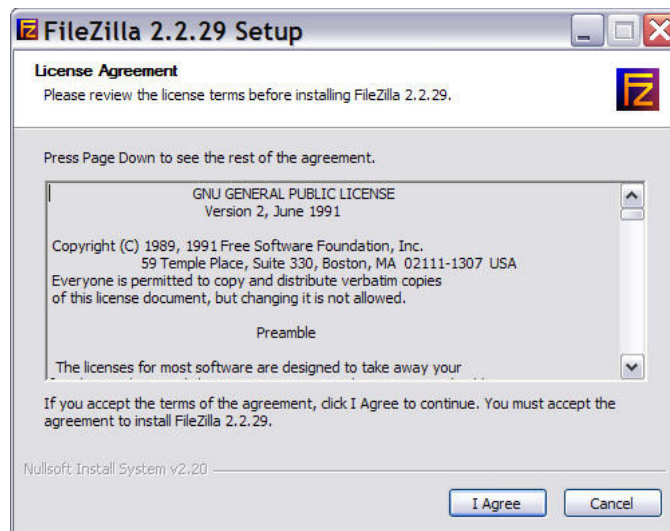
8. Click **Run** on the Internet Security pop-up window.



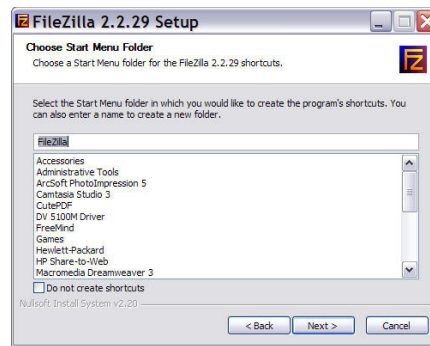
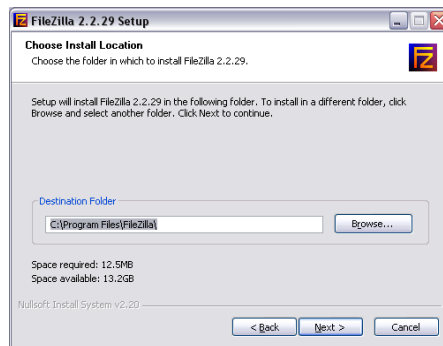
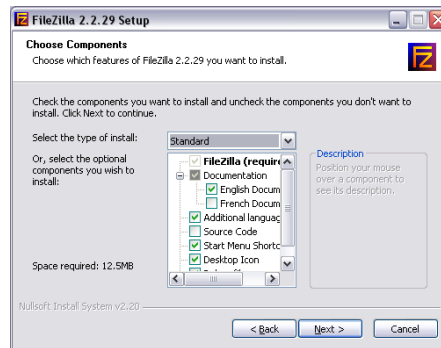
9. Click **OK** on the Installer Language pop-up window.



10. Click the **I Agree** button on the License Agreement window.

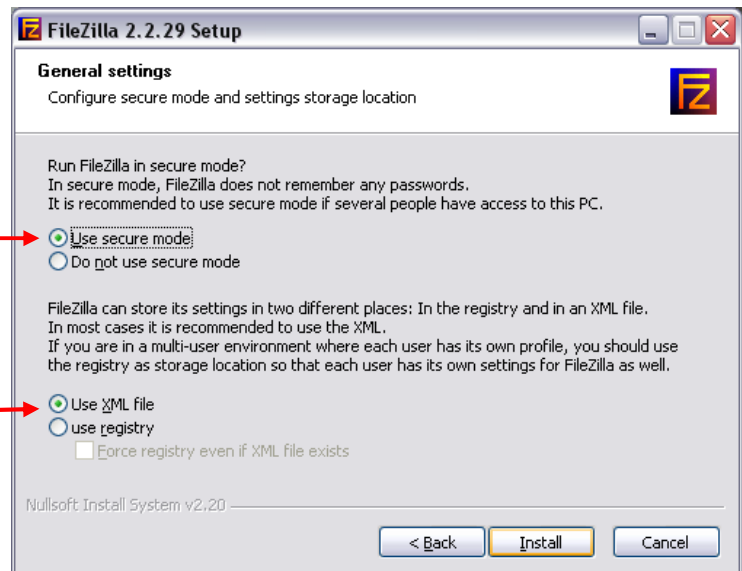


11. Click Next on the following three screens to accept the default settings.

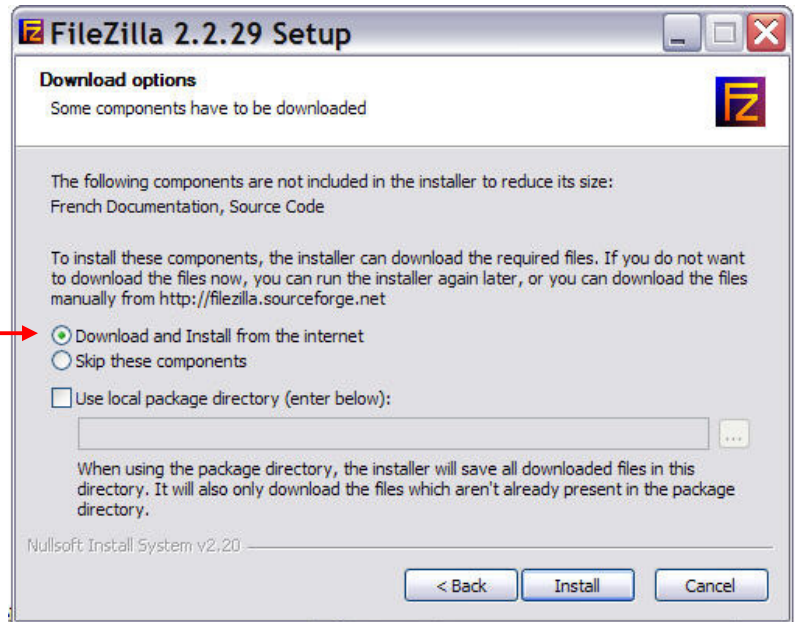


12. Select **Use secure mode** —————→
In this mode no one will have access to your FTP site without entering a password.

13. Select **Use XML file** —————→

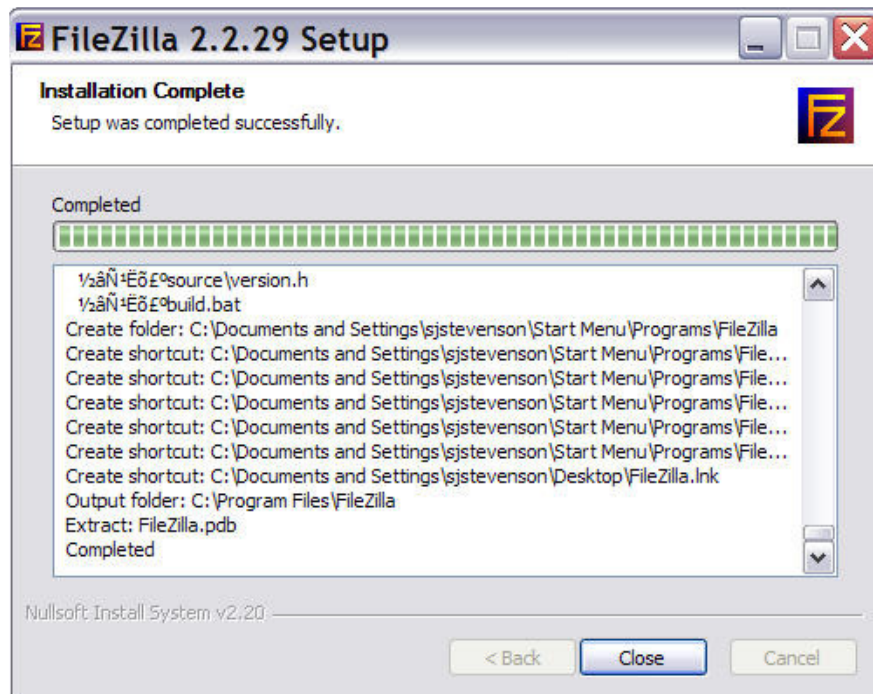


14. Select Download and Install from the internet.



15. Click the **Install** button.

16. Click on **Close** after the installation is complete.



At this point you have successfully installed the FTP client on your computer.

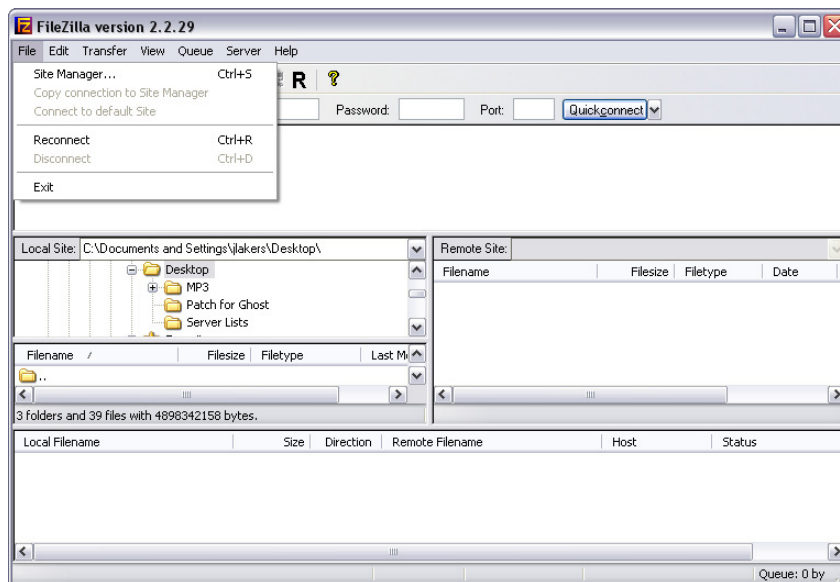
How to Use the FTP Client to Connect to the Uploads FTP Site

Before you can use the FTP client, FileZilla, you must request a FTP Server account.

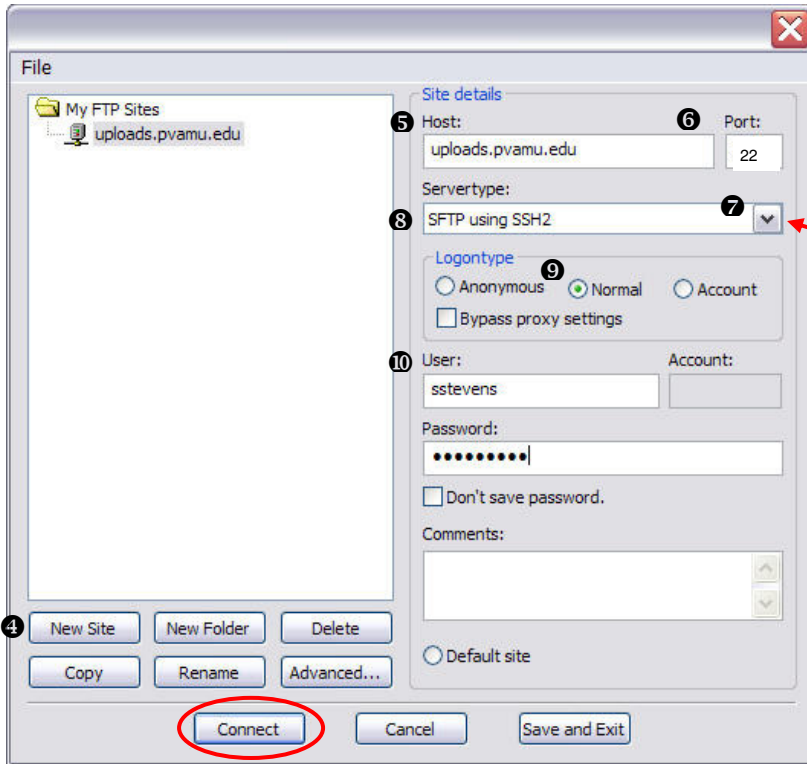
- Call the Helpdesk 936-261-2525 and ask for a FTP Server account.
- The FTP server administrator will call or email you with your username and password.

Once the FTP client application has been successfully downloaded, you will want to launch the application install file.

1. Click on the FileZilla  icon on your desktop.
2. Click on **File** in the top left corner of the application.
3. Select **Site Manager** from the drop down menu.



The Site Manager manages a list of servers so that you can quickly connect to them. It stores their addresses and their logon information so that you don't have to remember all server details. FileZilla will do that for you.

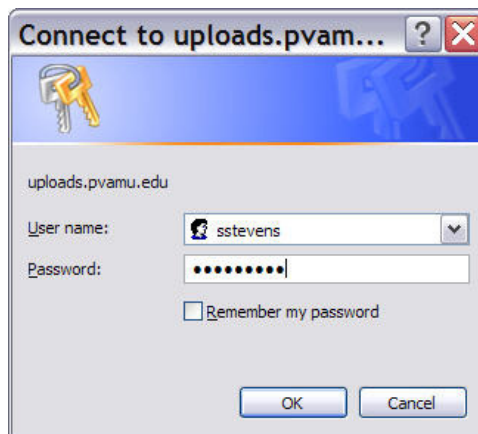


4. Click on **New Site** to create a new folder. Type the name of the FTP site (Uploads.pvamu.edu).
5. Click in the **Host:** textbox and type **uploads.pvamu.edu**.
6. Click on **Port:** textbox and type **22**.
7. Click on the down arrow by the Servertype textbox.
8. From the **Servertype** drop down menu choose **SFTP using SSH2**
9. Click on **Normal** in the Logontype section.
10. Enter your FTP server account **User** name and **Password** in the corresponding boxes.

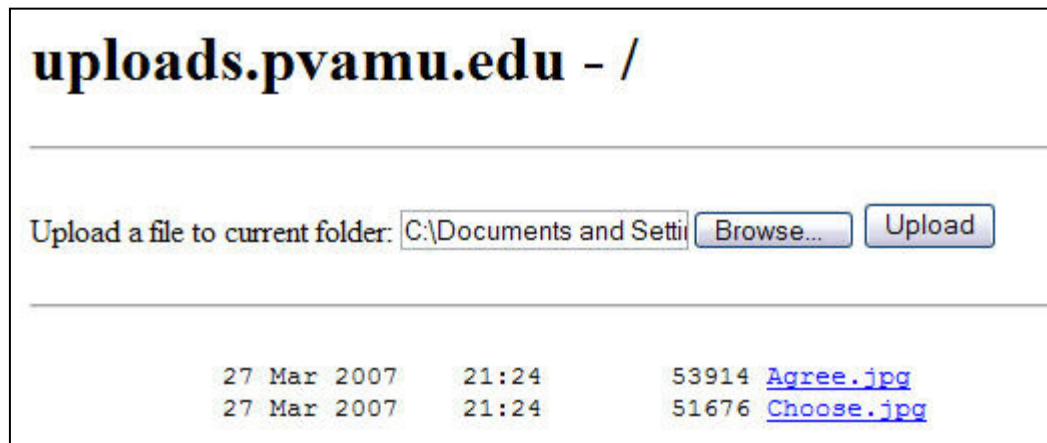
11. Click on **Connect**. Your settings are automatically saved.

Using the Uploads FTP site to Upload Files

1. Type **https://uploads.pvamu.edu** in the location box of your browser and push **Enter**.
2. In the **Connect to uploads** pop-up window enter the **User name** and **Password** assigned to you by the FTP server administrator.
3. Click **OK**





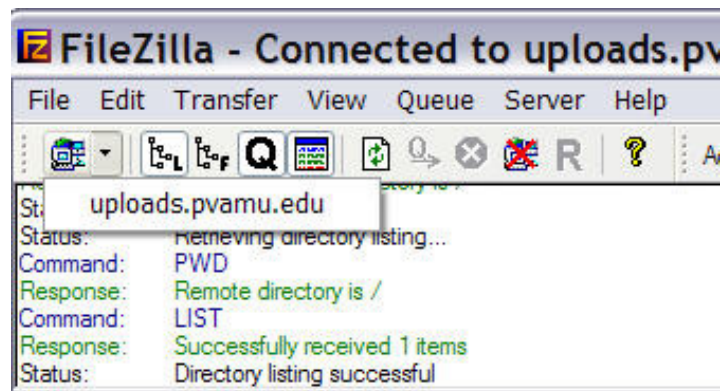
4. Click on Browse...
5. Select the file you want to upload



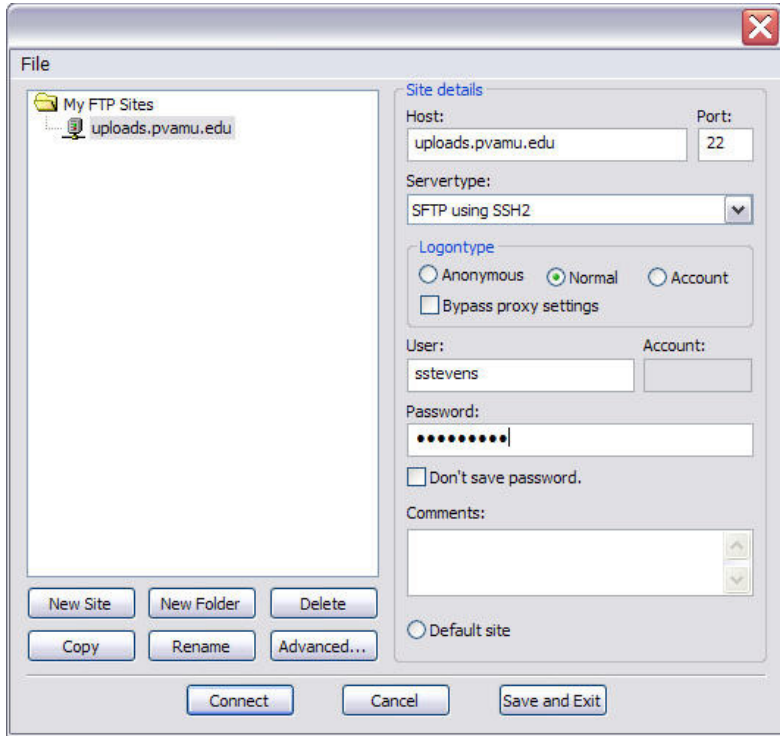
6. Click on **Upload**. The uploaded file will appear in the space below the textbox.
7. Close the browser.

To see the uploaded file in Site Manager:

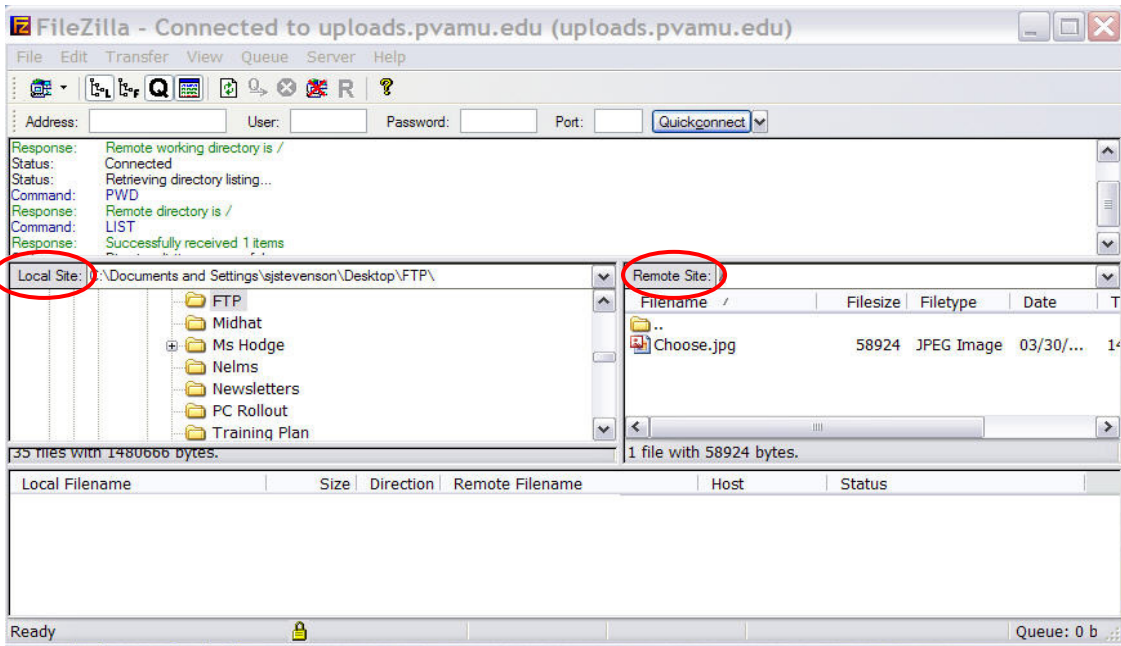
1. Click on the FileZilla  icon on your desktop.
2. Click on the down arrow on the Site Manager icon .
3. Select **uploads.pvamu.edu** from the drop down menu.



1. Click on **uploads.pvamu.edu**
2. Click on **Connect**



The uploaded will file appears in the **Remote Site** section on the right hand side of the menu



From the **Remote Site** section you can drag and drop the file into any file in the **Local Site** section on the left hand of the menu.